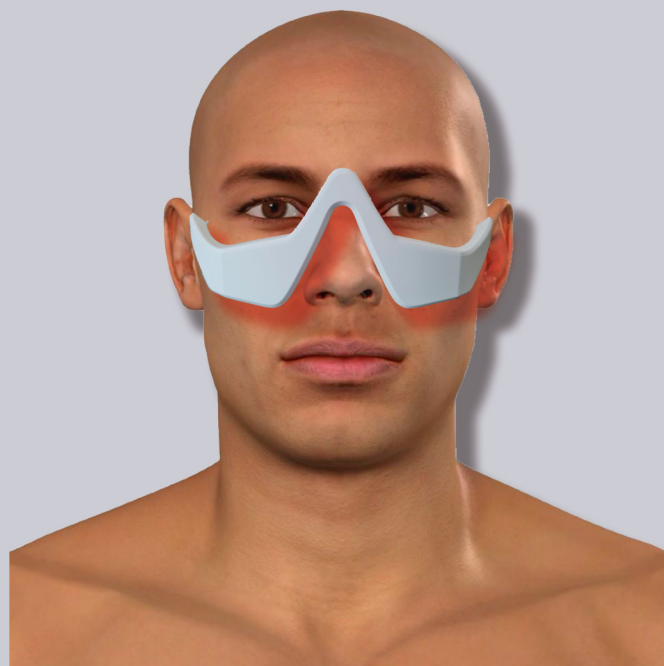
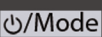
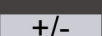

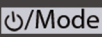


BIOLUX^{PRO}

LENS



Wrinkles

1. Wash your face before using, it must be cream, sun block, makeup and dust free. Leave your cheekbone area a little damp.
2. Press /Mode three seconds to turn your **LENS** on.
3. Press  to turn the three lights on.
4. Press /Mode to pulse the light.
5. Place the **LENS** below your eyes, touching your skin. Remember your cheekbones are damp.
6. Leave it on for 5 minutes, repeat the procedure every 8 hours.
7. Turn them off pressing /Mode
8. There might be a slight redness in the area for a few minutes.

Proper hydration enhances results



This does not suggest or replace any medical treatment

