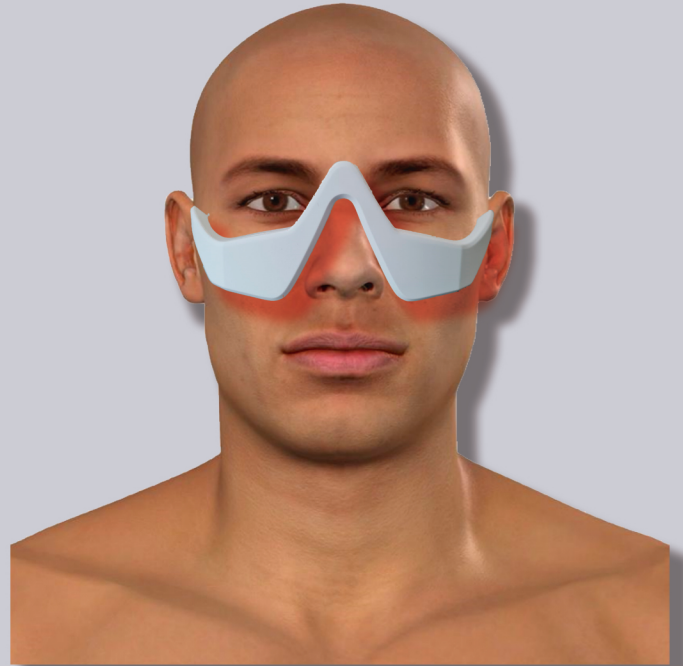
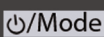
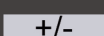
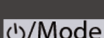



# BIOLUX<sub>PRO</sub>

## LENS



### Dark Circles

1. Wash your face before using, it must be cream, sun block, makeup and dust free. Leave your cheekbone area a little damp.
2. Press  three seconds to turn your **LENS** on.
3. Press  to turn the three lights on.
4. Press  to pulse the light.
5. Place the **LENS** below your eyes, touching your skin. Remember your cheekbones are damp.
6. Leave it on for 10 minutes when in the morning and 10 minutes at night.
7. Turn them off pressing .
8. There might be a slight redness in the area for a few minutes.

Proper hydration enhances results



This does not suggest or replace any medical treatment

